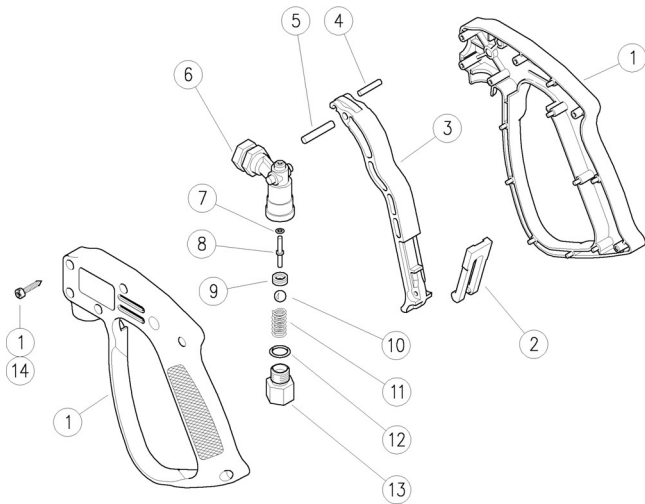


30.0000.00 RL16 spr.gun 3/8F-1/4F Bsp

30.0000.20 RL16 spr.gun 1/4FF Bsp

30.0000.40 RL16 spr.gun 1/4MF Bsp

30.0000.50 RL16 spr.gun 3/8F-1/4F Npt



Pos.	P/N	Description	Q.ty	K1	K2	K3	K4	
1	30.0014.24	Caseing-kit -RL16 +screws	1					1
2	30.1514.84R	Safety latch, PA yellow	1					10
3	30.0018.84R	Trigger -RL16-20, PA black	1					10
4	30.0020.51R	Parallel pin, 4x16 mm Sst.	1					10
5	30.0509.31R	Parallel pin, 5x24,5 mm brass	1					10
6	30.0017.35R	Housing -RL16-20, 1/4F Bsp brass (1,2,3)	1					3
6	30.0012.35R	Housing -RL16-20, 1/4F Npt brass (4)	1					5
7	10.3036.10R	O-ring, 1,78x2,9 mm Vi 70	1	•				10
8	30.0019.51R	Piston, 3 mm Sst.	1	•				10
9	30.0021.84R	Seat, 5,5x10,5x4,2 mm PA black	1	•				10
10	14.7448.00R	Ball, 5/16" Sst.	1	•				10
11	30.0001.51R	Spring, 1,4x7,8x13,5 mm Sst.	1					10
12	10.3058.02R	O-ring, 1,78x10,82 mm Ni 85	1	•				10
13	30.0103.31R	Nipple, 1/4M-3/8F Bsp brass (1)	1					5
13	30.0023.31R	Nipple, 1/4Bsp MF brass (2)	1					3
13	30.0022.31R	Nipple, 1/4Bsp MM brass (3)	1					3
13	30.0004.31R	Nipple, 1/4M Bsp-3/8F Npt brass (4)	1					5
14	16.3077.00R	S/tapping screw, DIN7981 3,5x18 mm	6					10

Kit	P/N	Description	
K1	30.0002.24	Repair kit -RL16, 5x1pcs.	1

(1) 30.0000.00 (2) 30.0000.20 (3) 30.0000.40 (4) 30.0000.50

